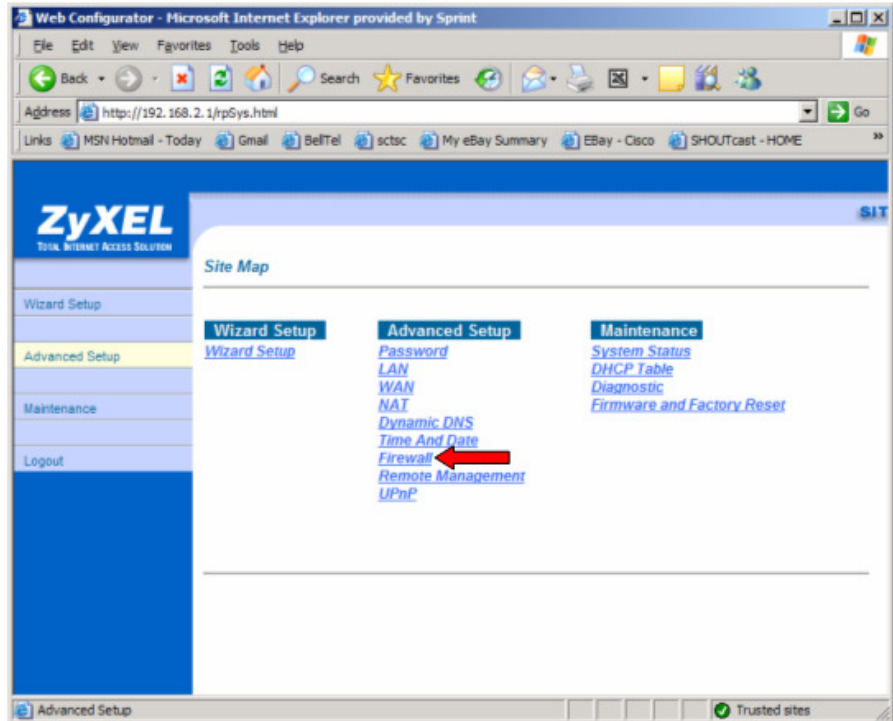


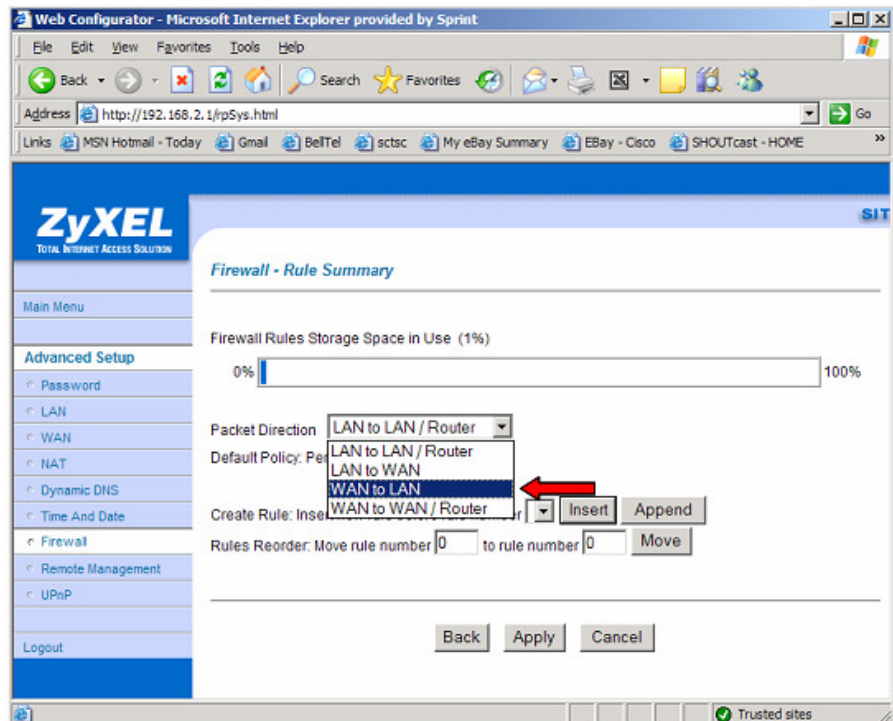


ZyXel 660R Port Forwarding

1. At the Main Menu click on the “Firewall” listing.

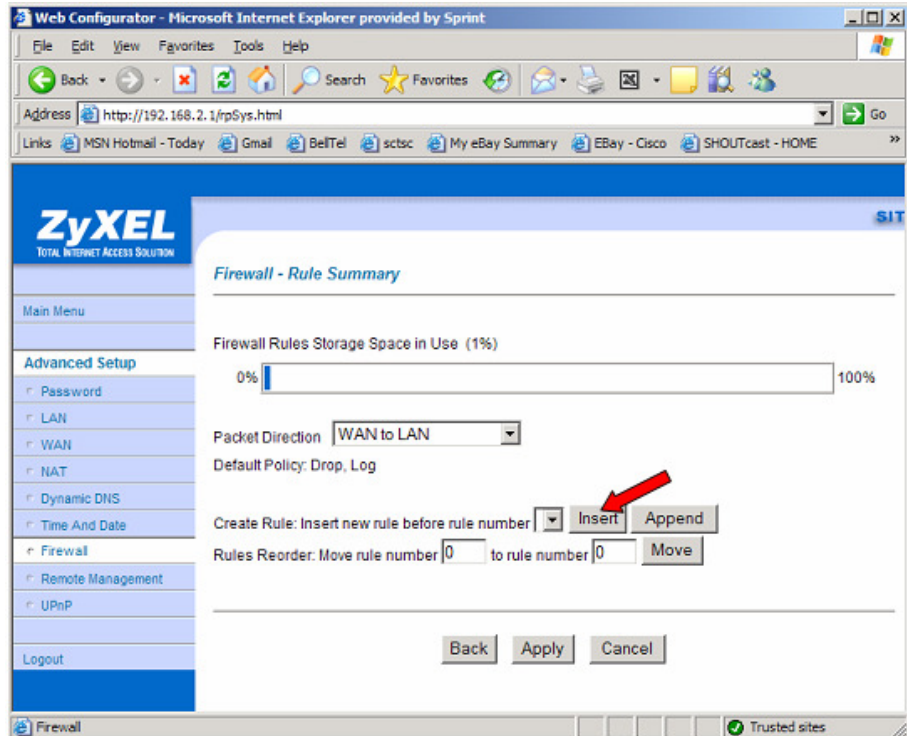


2. Click on the drop down menu to select the “Packet Direction” for the Firewall Rule.

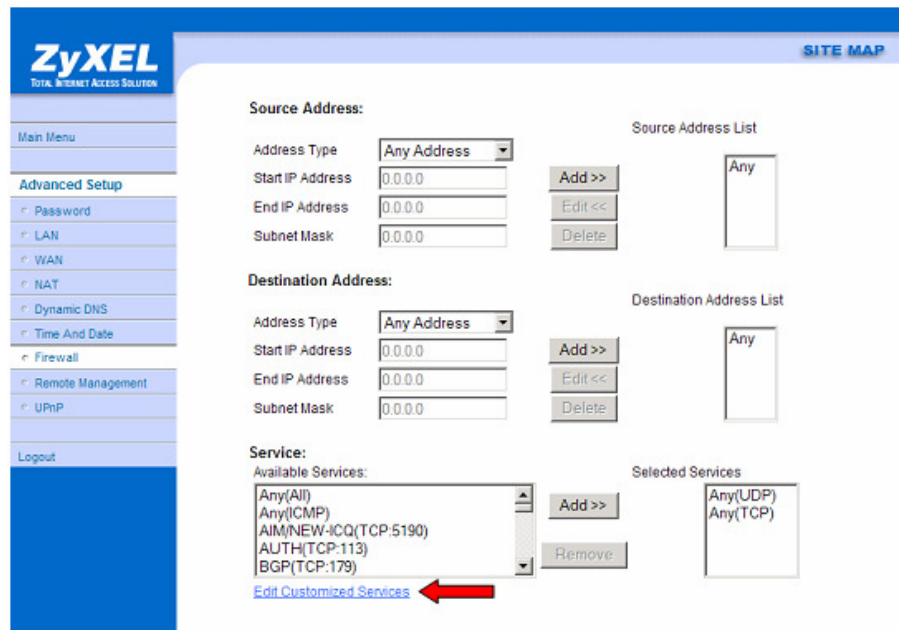




3. Click "Insert" to configure the Firewall Rule.

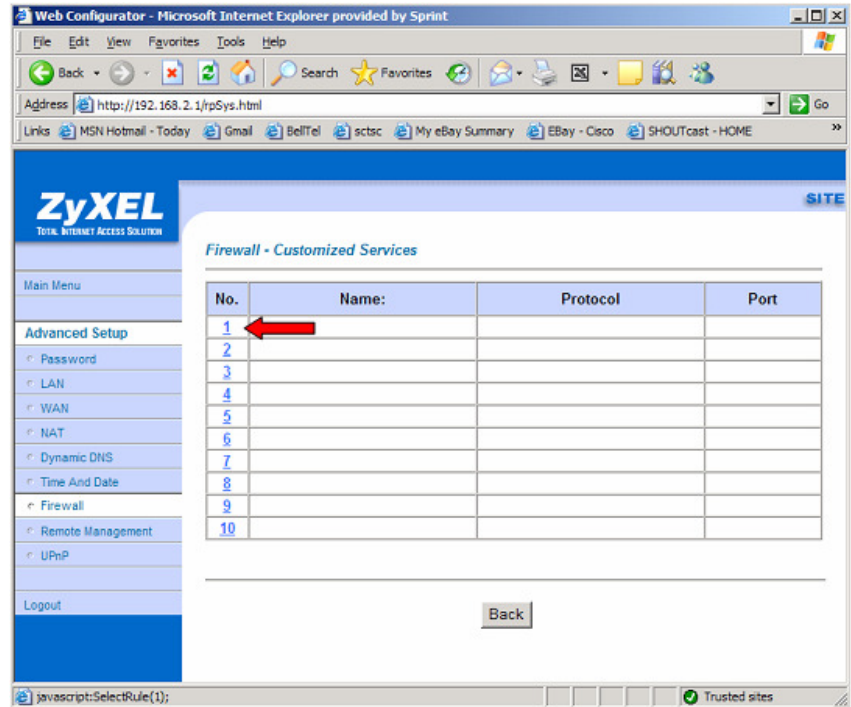


4. Click on "Edit Customized Services" to enter the parameters of the new rule.





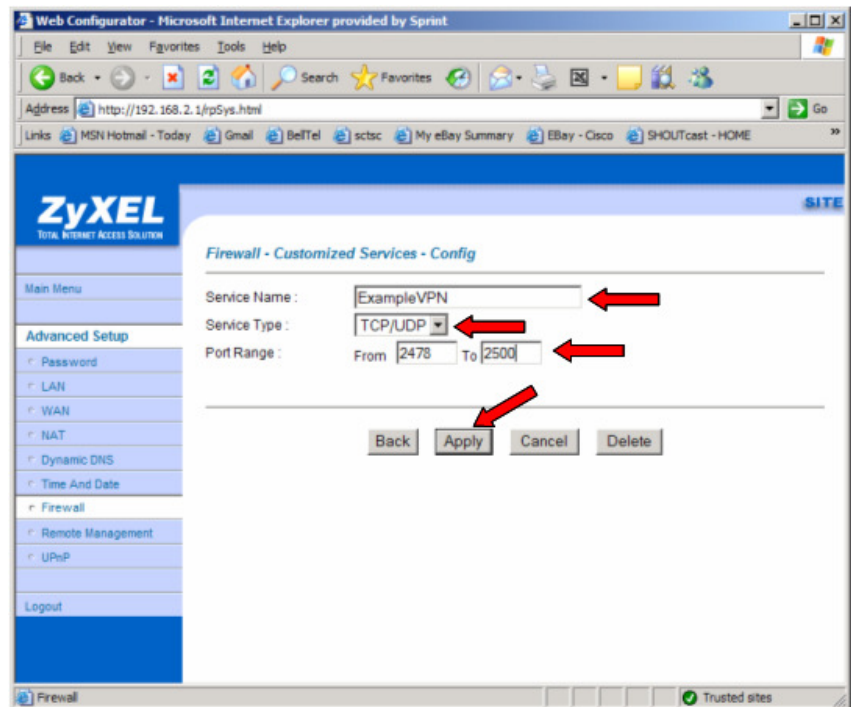
5. Click on the next available Rule.



6. Enter the following information:

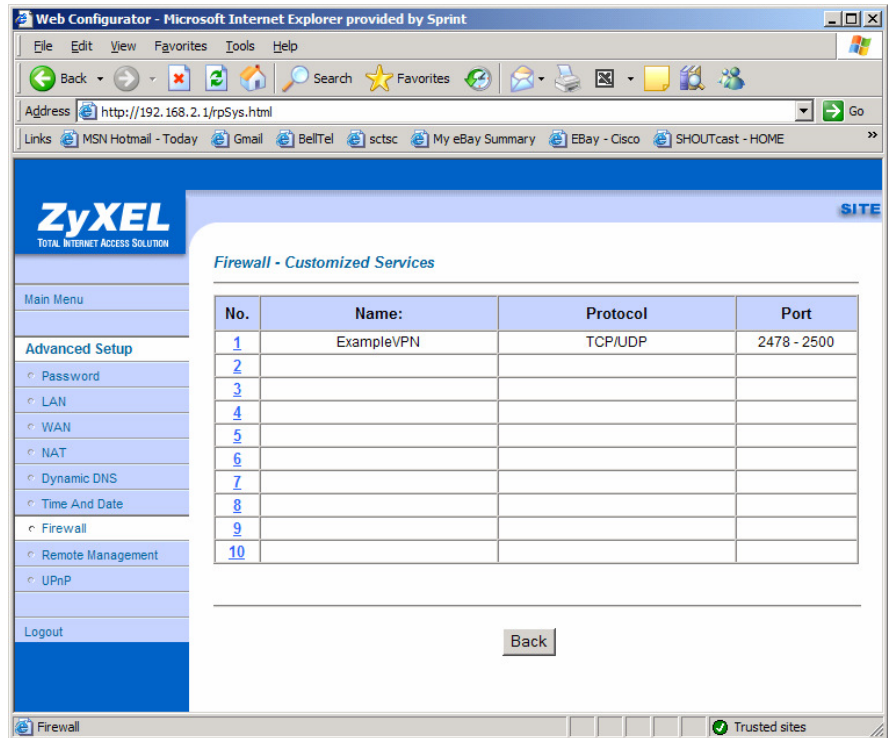
- Service Name
- Service Type
- Port Range

7. Click “Apply”

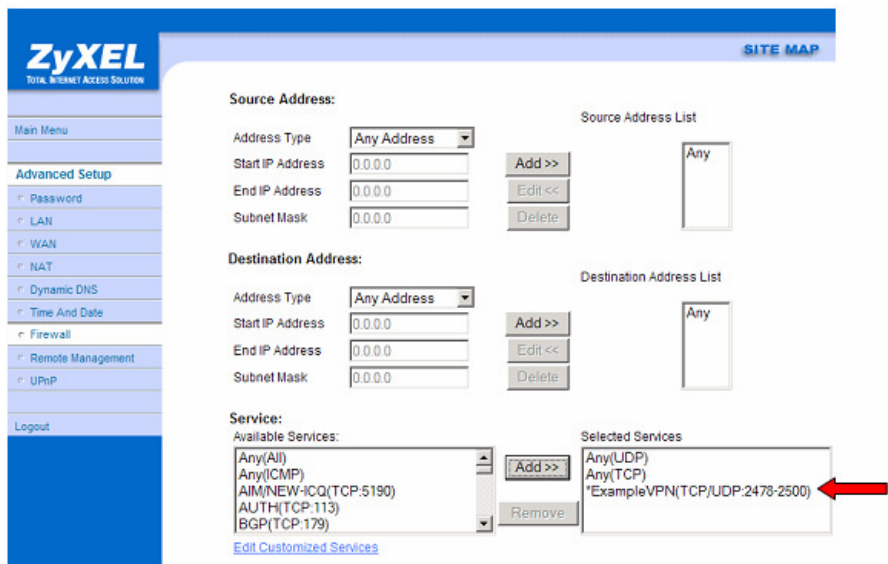




8. You will be taken to the screen that will display the newly created service. Click "Back".



9. Click on the newly created service under the "Available Services" listing on the left side and click "Add". You will now see the new rule entered into the "Selected Service" section.





Visit our Website
<http://www.embarq.com/hsisupport>

EMBARQ High-Speed
Internet

10. Click “Apply”.

ZyXEL TOTAL INTERNET ACCESS SOLUTION SITE MAP

Main Menu

Advanced Setup

- Password
- LAN
- WAN
- NAT
- Dynamic DNS
- Time And Date
- Firewall
- Remote Management
- UPnP

Logout

Service:

Available Services: Any(All), Any(ICMP), AIM/NEW-ICQ(TCP:5190), AUTH(TCP:113), BGP(TCP:179)

Selected Services: Any(UDP), Any(TCP), *ExampleVPN(TCP/UDP:2478-2500)

[Edit Customized Services](#)

Schedule:

Day to Apply: Everyday

Sun Mon Tue Wed Thu Fri Sat

Time of Day to Apply : (24-Hour Format)

All day

Start: 0 hour 0 minute End: 0 hour 0 minute

Log:

Log Packet Detail Information.

Alert:

Send Alert Message to Administrator When Matched

Back Apply Cancel Delete

11. You will now be taken back to the Firewall - Rule Summary page. You can verify the newly created rule in the services list. Click “Main Menu”.

ZyXEL TOTAL INTERNET ACCESS SOLUTION SITE MAP

Main Menu

Advanced Setup

- Password
- LAN
- WAN
- NAT
- Dynamic DNS
- Time And Date
- Firewall
- Remote Management
- UPnP

Logout

Firewall - Rule Summary

Firewall Rules Storage Space in Use (1%)

0% 100%

Packet Direction: WAN to LAN

Default Policy: Drop, Log

Rule	Active	Source IP	Destination IP	Service	Action	Schedule	Log	Alert
1	Y	Any	Any	*ExampleVPN(TCP/UDP:2478-2500)	Permit	No	No	No

Create Rule: Insert new rule before rule number 1

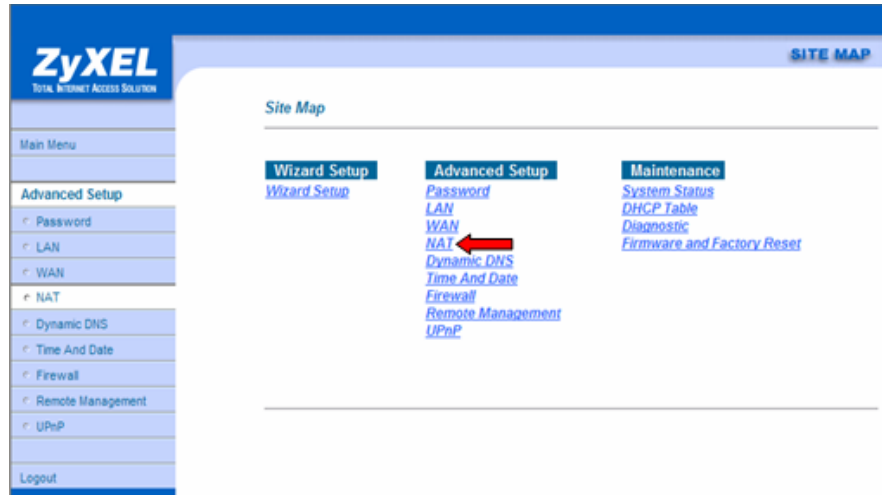
Rules Reorder: Move rule number 0 to rule number 0

Back Apply Cancel

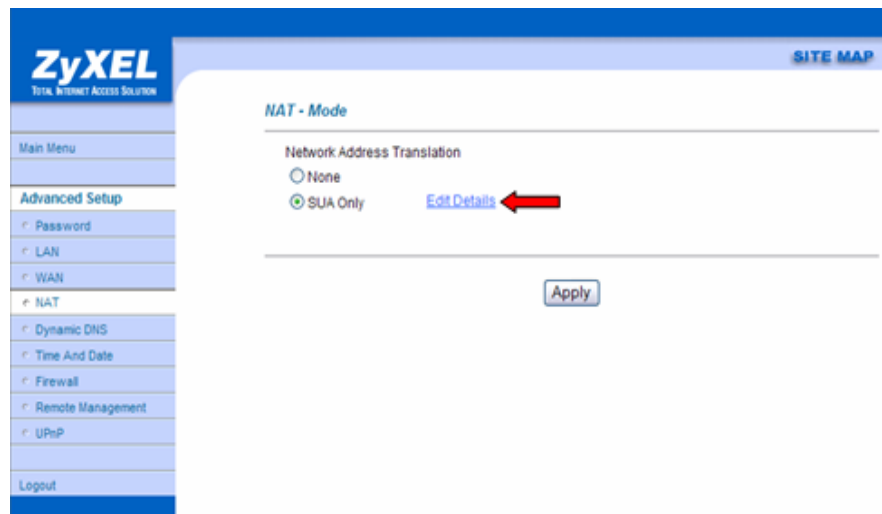
Firewall Trusted sites



12. Select "NAT".



13. Select "Edit Details".





Visit our Website
<http://www.embarq.com/hsisupport>

EMBARQ High-Speed
Internet

14. Enter the following information:

- Starting Port
- Ending Port
- IP Address

The screenshot shows the ZyXEL web interface for NAT configuration. The page title is "NAT - Edit SUA/NAT Server Set". On the left is a navigation menu with options like "Main Menu", "Advanced Setup", "Password", "LAN", "WAN", "NAT", "Dynamic DNS", "Time And Date", "Firewall", "Remote Management", "UPnP", and "Logout". The main content area contains a table with 12 rows and 3 columns: "Start Port No.", "End Port No.", and "IP Address". Row 1 has "All ports" in both port columns and "0.0.0.0" in the IP column. Row 2 has "0" in both port columns and "0.0.0.0" in the IP column. Red arrows point to the "0" in the "Start Port No." and "End Port No." fields of row 2, and to the "0.0.0.0" in the "IP Address" field of row 2. Below the table are "Save" and "Cancel" buttons.

	Start Port No.	End Port No.	IP Address
1	All ports	All ports	0.0.0.0
2	0	0	0.0.0.0
3	0	0	0.0.0.0
4	0	0	0.0.0.0
5	0	0	0.0.0.0
6	0	0	0.0.0.0
7	0	0	0.0.0.0
8	0	0	0.0.0.0
9	0	0	0.0.0.0
10	0	0	0.0.0.0
11	0	0	0.0.0.0
12	0	0	0.0.0.0

If you have further technical questions about your EMBARQ HSI service, Visit us at:

<http://www.embarq.com/hsisupport> or [Click Here Chat with Technical Support](#)

[Download Virtual Assistant](#)